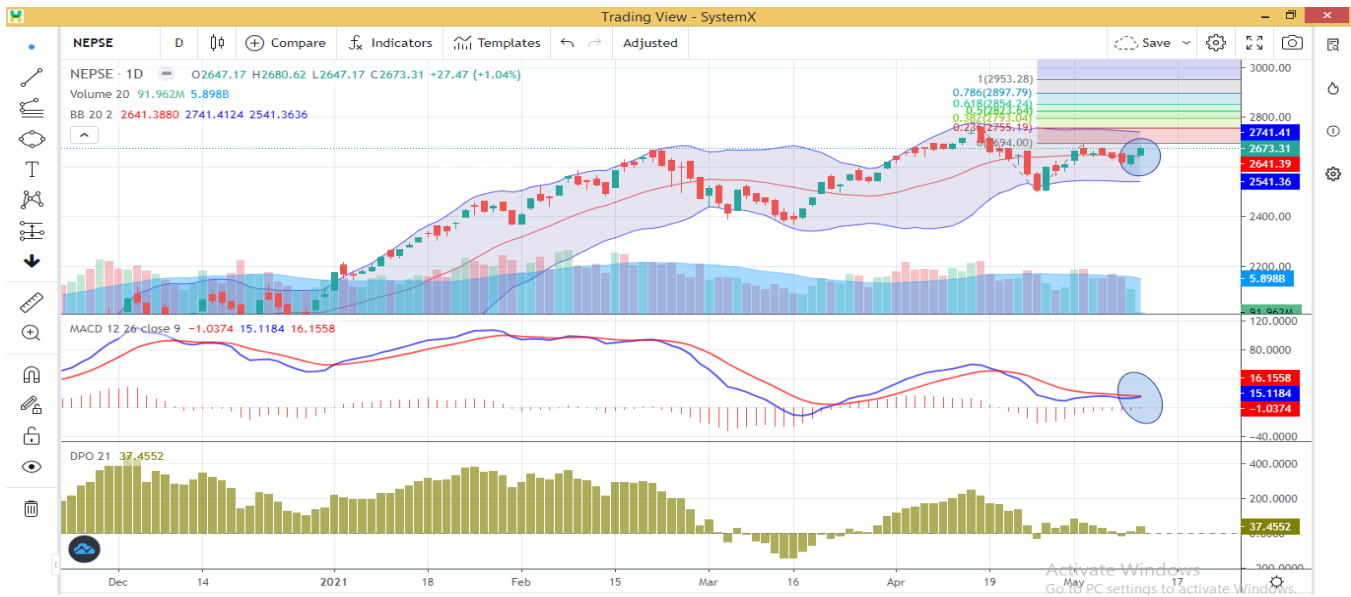




Market Analysis:



As per attached chart, Market has further accelerated by 27.47 points & closed at 2673 level. Market has opened on meager 1.63 positive points & continued its yesterday's bullish momentum to close higher. Index has formed marubozu white like structure indicating bullish signal as per daily candlestick chart. Small upper shadow showing that the market corrected some points on last minutes. Back to back bullish chart formation is confirming the bull for short term. Next couple of days will be crucial to watch, whether it give confirmation for northern journey or not. All the sectors closed green on two consecutive days after red opening on Sunday. Daily turnover also increased by 38.22% than yesterday's, which is almost near to monthly moving average volume of 635 crores. While single NRIC shares traded most with 13.19% of total turnover.

Since the move has been in less volatile and weak but had a winning streak sessions. NEPSE witnessed a northern move and added the more than 54 points on two days, after testing its psychological hurdle point of 2600 level. As mentioned earlier, bullish stance will remain intact as this movement is leading by growth sectors like trading, others, non-life, life, microfinance & manufacturing sectors. In case of breakout, the index will test 2700 and 2755 levels. However, a stable move below its last week's high of 2694 level will confirm the short-term bearish reversal for the index. That could drag the index towards below 2500 mark again. Unless index do not cross one of these higher levels we will not see a substantial move and hence a trade in either direction may trigger a stop loss. Now, purely looking at charts, this up move should only be interpreted as a beginning of new journey as the market is making higher low, strong break out of 2700 level on higher volume will give clear direction. Hence, all eyes would be on this level in this week.

Corporate News: 3,25,099 units bonus share of ILBS has been listed in NEPSE.

Market Summary : (11.05.2021)

Index	Current	Points Change	% Change
NEPSE	2,673.31	27.47	1.04%
Turnover "NPR"	5,810,673,071.00	1,606,840,282.00	38.22%



- Market gained 27.47 points on Tuesday and closed 2673.31 level.
- **Sub-Indices:**

Sub-Indices	Current	Points Change	%Change
Banking	1,785.19	3.38	0.19
Trading	4,047.54	221.67	5.79
Hotels And Tourism	3,259.13	23.19	0.72
Development Bank	2,832.95	15.23	0.54
Hydropower	2,609.06	21.07	0.81
Finance	1,271.55	17.49	1.39
Non-Life Insurance	13,622.39	176.48	1.31
Manu.& Pro.	5,901.57	139.70	2.42
Others	2,154.60	53.13	2.53
Microfinance	5,481.41	65.12	1.20
Life Insurance	17,368.95	267.18	1.56
Mutual Fund	13.42	0.02	0.18
Investment	100.15	1.49	1.51

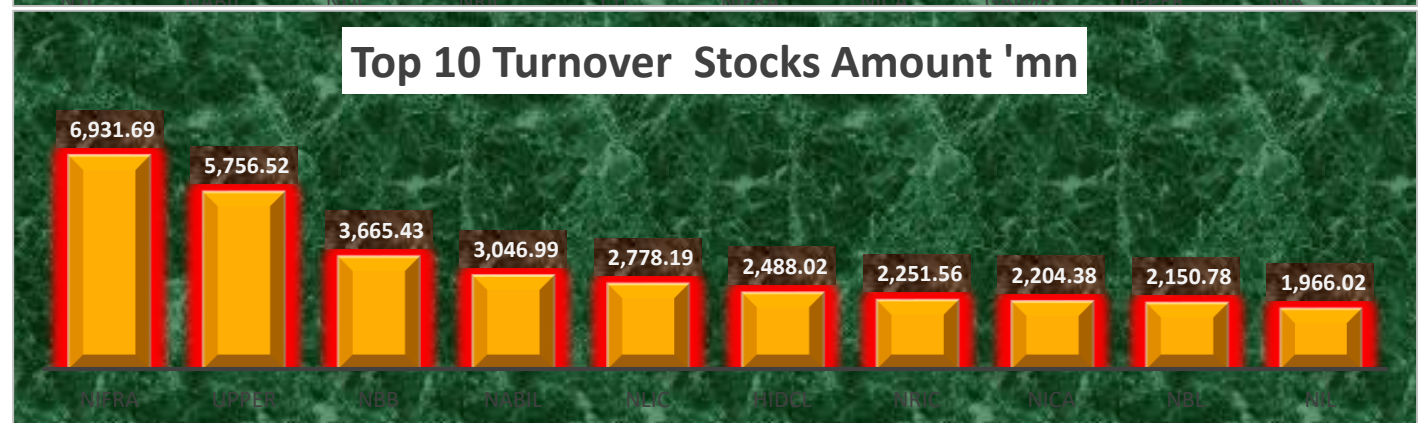
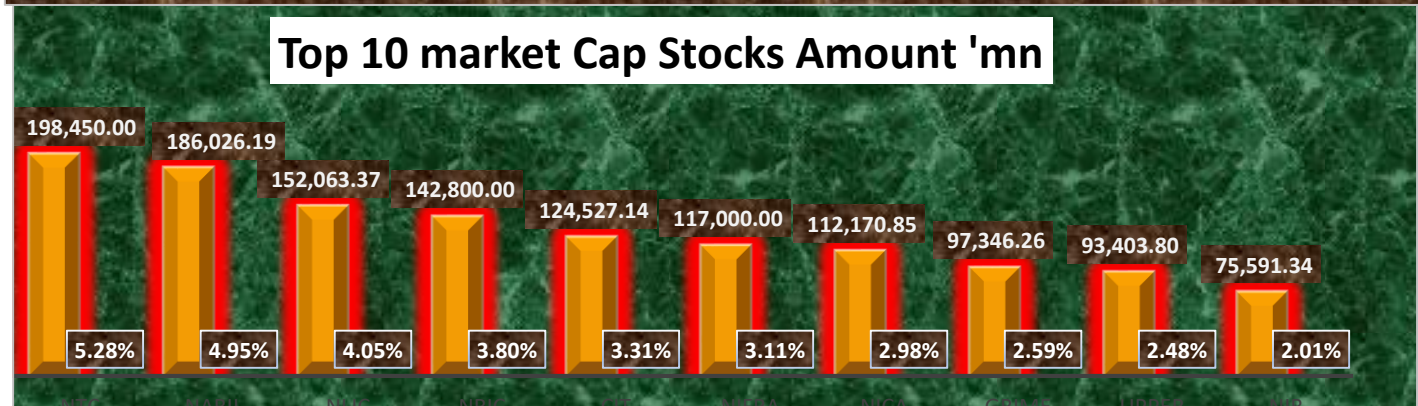
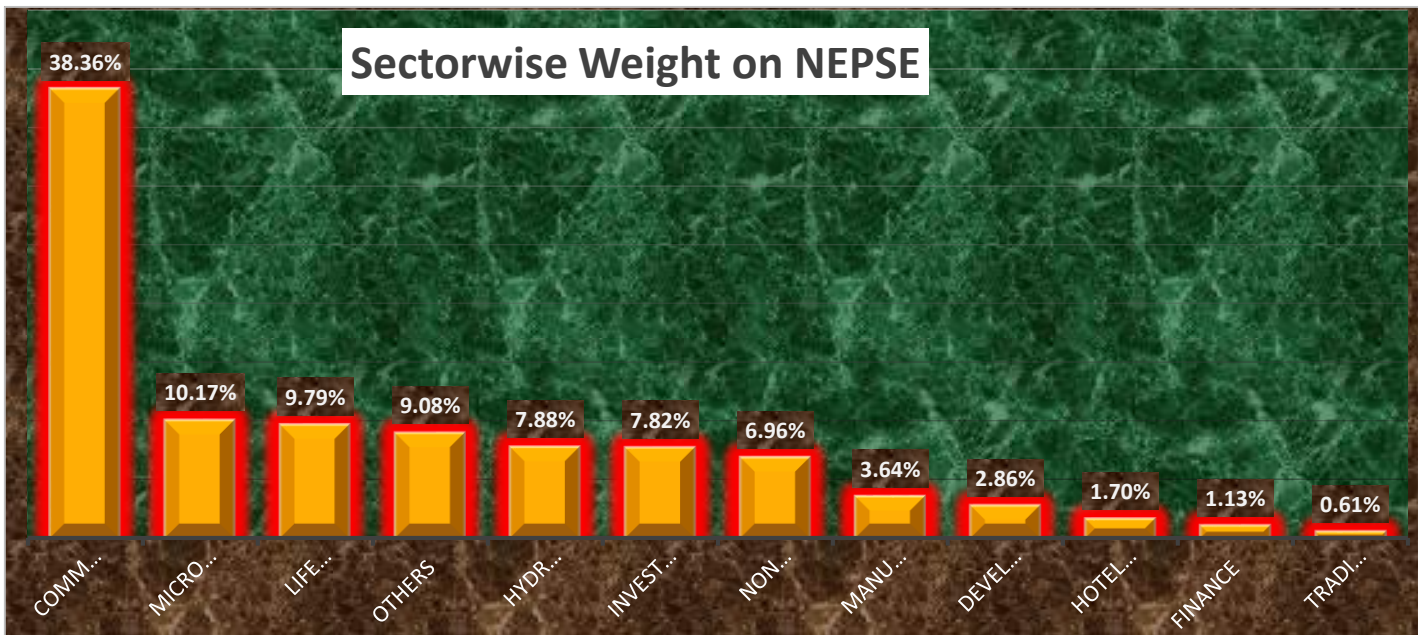
Stock Watch list:

Uptick Stocks	SMATA,JOSHI,RURU, GILB, MMFDB, JSLBB, SLBS,RBCLPO,RBCL
Downtick Stocks	FMDBL, NFS, BPCL, UNL, OHL, NHDL, SHL, TRH, CGH,SWBBL

Major Market Movement:

Top Gainers				Top Losers			
Symbol	LTP	Point Change	% Change	Symbol	LTP	Point Change	% Change
BNT	10,065.00	915.00	10.00	BBC	4,897.00	(544.00)	(10.00)
RURU	662.00	60.00	9.97	LEC	357.00	(11.00)	(2.99)
UMHL	255.00	23.00	9.91	BARUN	269.00	(6.00)	(2.18)
GMFIL	278.00	25.00	9.88	GIMES1	16.25	(0.23)	(1.40)
SMATA	964.00	80.00	9.05	PPCL	304.00	(4.00)	(1.30)
NRN	680.00	54.00	8.63	CMF1	10.68	(0.13)	(1.20)
NABBC	569.00	45.00	8.59	HGI	700.00	(8.00)	(1.13)
STC	11,010.00	811.00	7.95	KRBL	196.00	(2.00)	(1.01)
UPCL	204.00	12.00	6.25	RRHP	400.00	(4.00)	(0.99)
RHPC	272.00	15.00	5.84	LUK	10.25	(0.10)	(0.97)
Top Stocks by Turnover			Top stocks by shares traded			Top stocks by no. of transaction	
Symbol	Turnover	Closing Price	Symbol	Shares Traded	Closing Price	Symbol	No. Of Transactions
NRIC	766,534,418.00	1,568.00	API	577,295.00	354.00	NRIC	5,541.00
API	202,370,381.00	354.00	UMHL	557,413.00	255.00	API	2,639.00
SHIVM	162,270,429.00	1,545.00	NRIC	493,829.00	1,568.00	NIFRA	2,459.00
HIDCL	159,741,960.00	525.00	SFMF	315,600.00	13.10	JLI	1,902.00
NRN	141,720,155.00	680.00	HIDCL	306,829.00	525.00	NRN	1,716.00
UMHL	138,354,915.00	255.00	SPDL	288,852.00	338.00	HIDCL	1,188.00
NABIL	120,585,084.00	1,265.00	CBL	260,794.00	239.00	UMHL	1,134.00
NIFRA	116,713,070.00	537.00	NBL	245,491.00	417.00	SHIVM	1,105.00
RBCL	108,592,303.00	19,900.00	UPCL	223,094.00	204.00	UPPER	1,064.00
STC	105,299,075.00	11,010.00	NIFRA	216,667.00	537.00	SPDL	1,043.00

Monthly Update (Chaitra 2077):



Contact Us: **NIC ASIA Capital Limited**, 3rd Floor, Siddhartha Insurance Complex, Babar Mahal, Kathmandu, Tel No: +977-01-5705994 (Hunting Line), 5705664, 5706318,

Fax No: 977-1-57064, Email: info@nicasiacapital.com, Website: www.nicasiacapital.com

Disclaimer: This summary is designed to give information on general nature only, so you should seek advice from your investment advisor or others as appropriate before taking any action. So, NIC ASIA Capital Limited expressly disclaim representation of opinion, thus the information as in should only be used by investor who are aware of risk in securities trading. Furthermore, NIC ASIA Capital does not accept any liability whatsoever for any loss arising in the securities trading from the use of this content.